



- Improve your service level
- Use your transportation assets more effectively
- Reduce your transportation costs

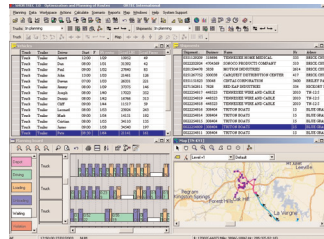
Plan and optimize your routes

SHORTREC is the reference solution for transportation and logistics. The advanced planning and decision support software is used to optimize distribution and pickup operations in a wide-ranging spectrum of activities such as:

- Transportation and logistics
- Distribution of petroleum, food and pharmaceutical products
- Waste collection
- Courier services

SHORTREC is the ideal tool to design effective distribution plans by taking into account a series of technical and operational constraints such as:

- The maximum number of clients on a route
- The maximum number of routes per vehicle
- The maximum loading capacity (volume, weight)
- Optimal vehicle or driver territory alignment
- Time restrictions (personnel, clients, depots)



User-friendly, flexible and effective

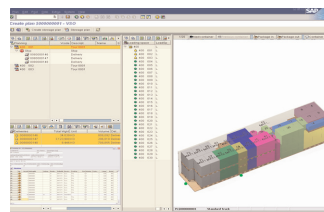
- Scheduling over one or several days
- Single or multiple depots
- Single or multiple compartments
- Meeting time restrictions
- Handling information from mobile equipment
- Installed as a stand-alone system or interfaced with your ERP system

Optimize vehicle loading

LOADDESIGNER is a load planning system designed to maximize equipment use and optimize loading space while reducing the number of required handling units.

LOADDESIGNER optimizes the quantity and contents of commissioned pallets and the use of available space in vehicles while respecting a number of predefined metrics such as maximum weight or volume, customer requirements or assembly restrictions.

The application provides clear loading instructions and 3D display of load designed to reduce vehicle loading time to a minimum.



The Ortec Suite

- Decreases transportation costs by 5 to 15%:
 - By reducing the number of vehicles
 - By reducing mileage
- Increases the number of completed deliveries
- Improves service level
- Reduces planning time by 50 to 90%
- Maximizes vehicle loading rate.

Plan and optimize your transportation assets